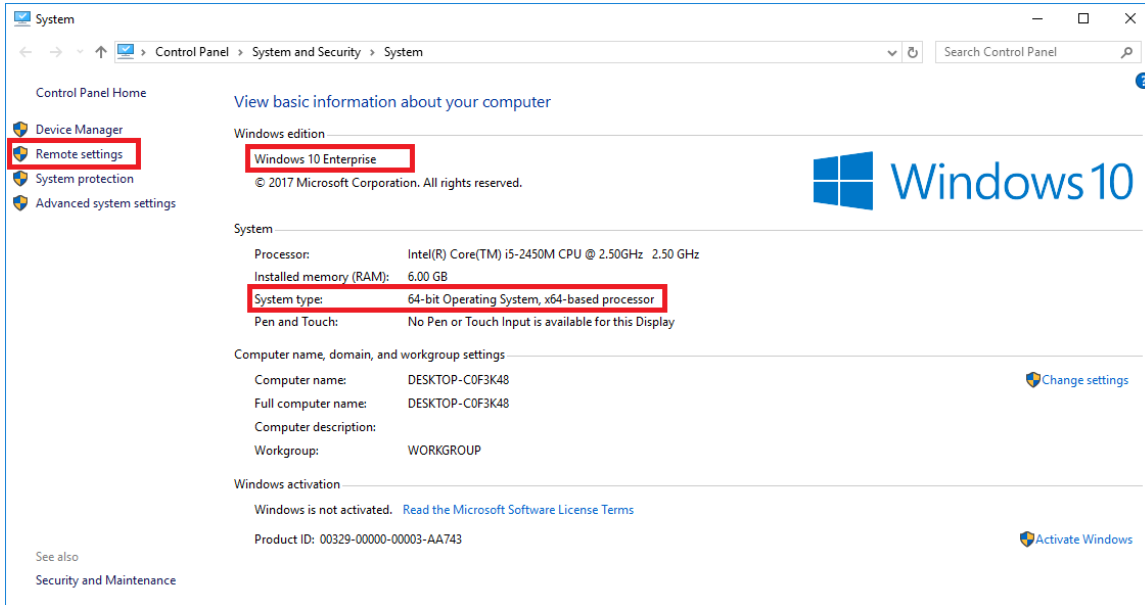


Windows 10 X64 Remote Desktop Configuration

Remote User setting:

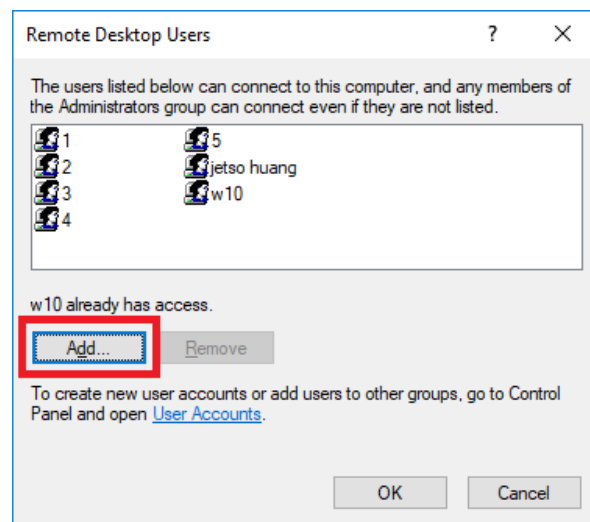
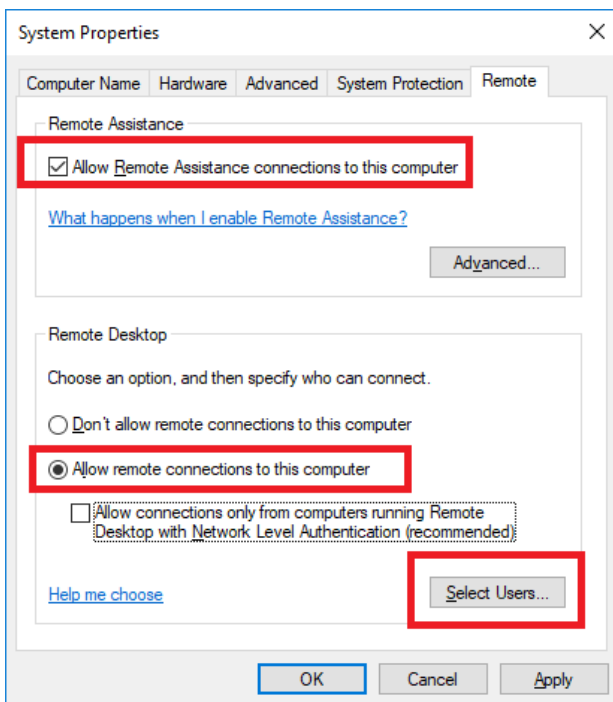
1. Click Remote settings.



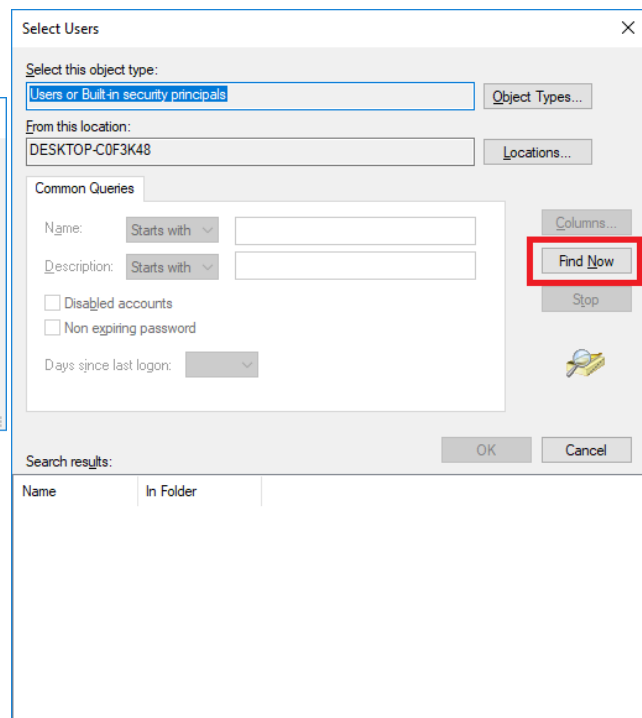
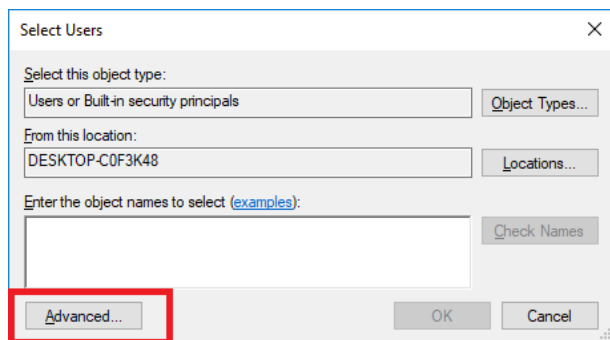
2. Check "Allow Remote Assistance....." and "Allow remote connections to ..."

Then click "Select Users..."

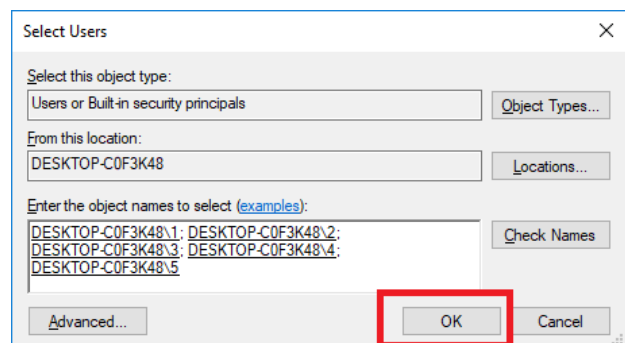
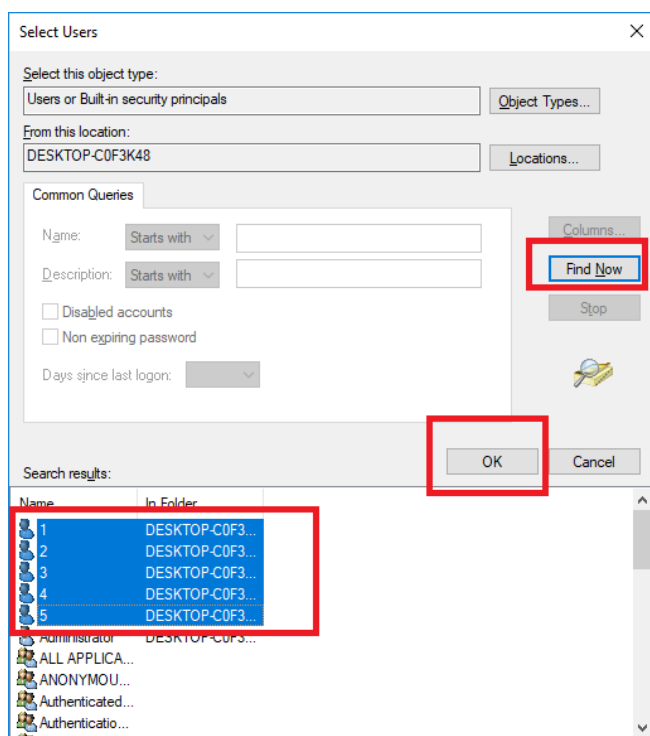
2-1. Click "Add".



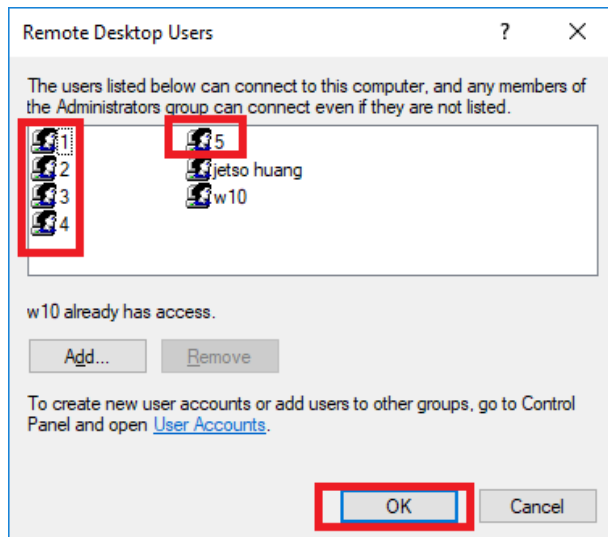
3. Click “Advanced...”
 - 3-1. Click “Find Now”.



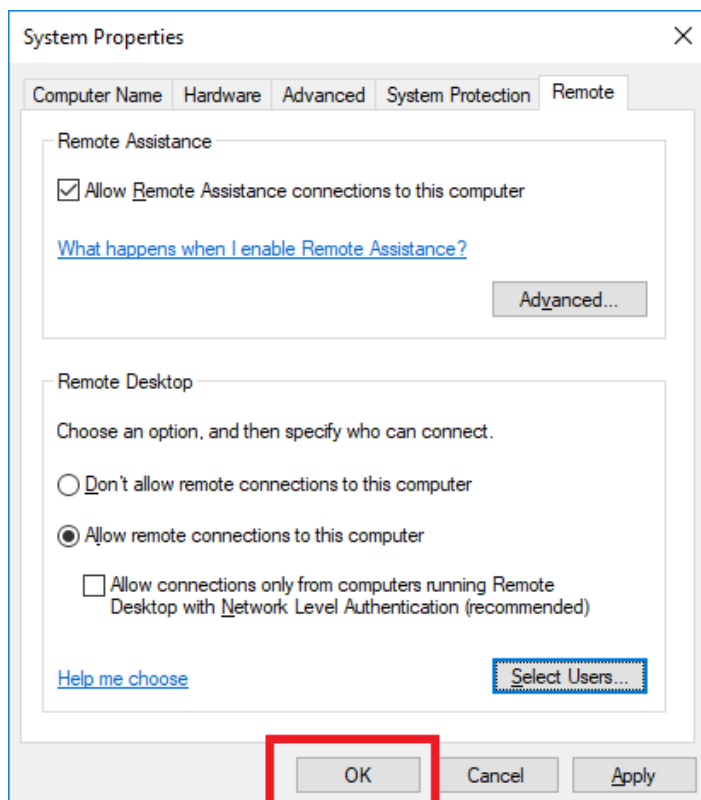
4. Select the user are going to be remote then click “OK”
 - 4-1. Click “OK” again.



5. Click “OK” to make user to be authorize remote user in this system .

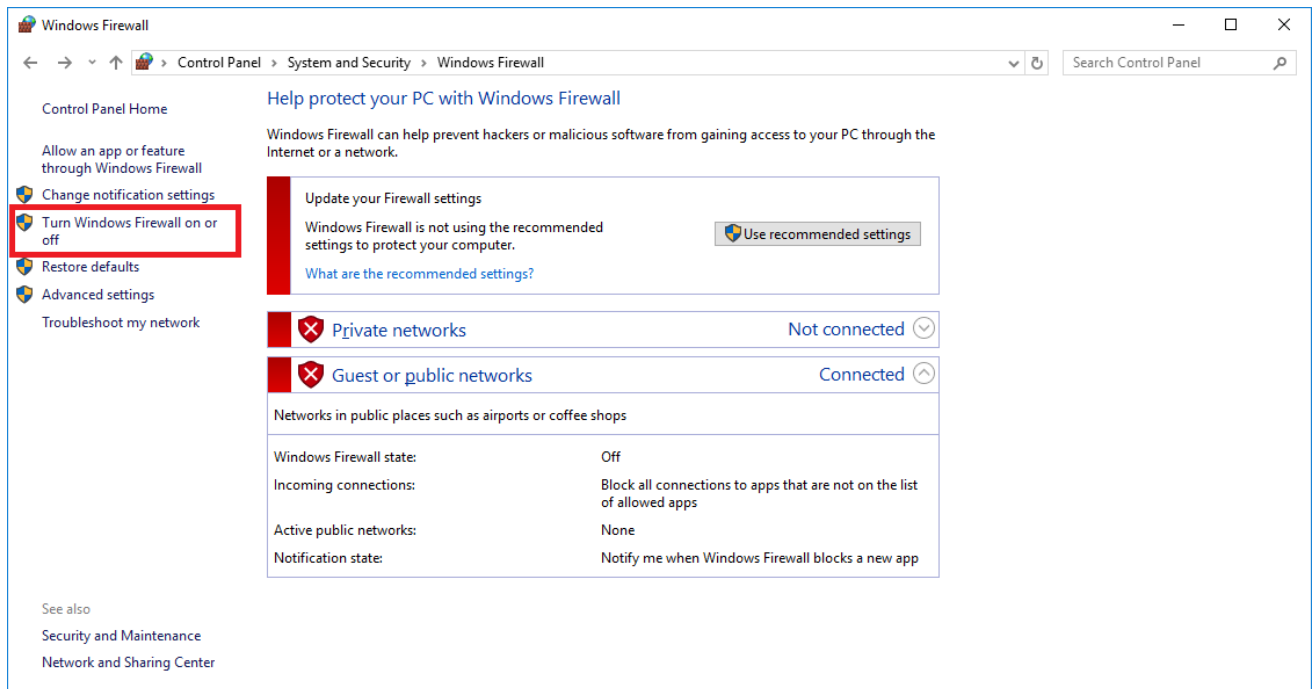


6. Click “OK” to finish the remote user settings

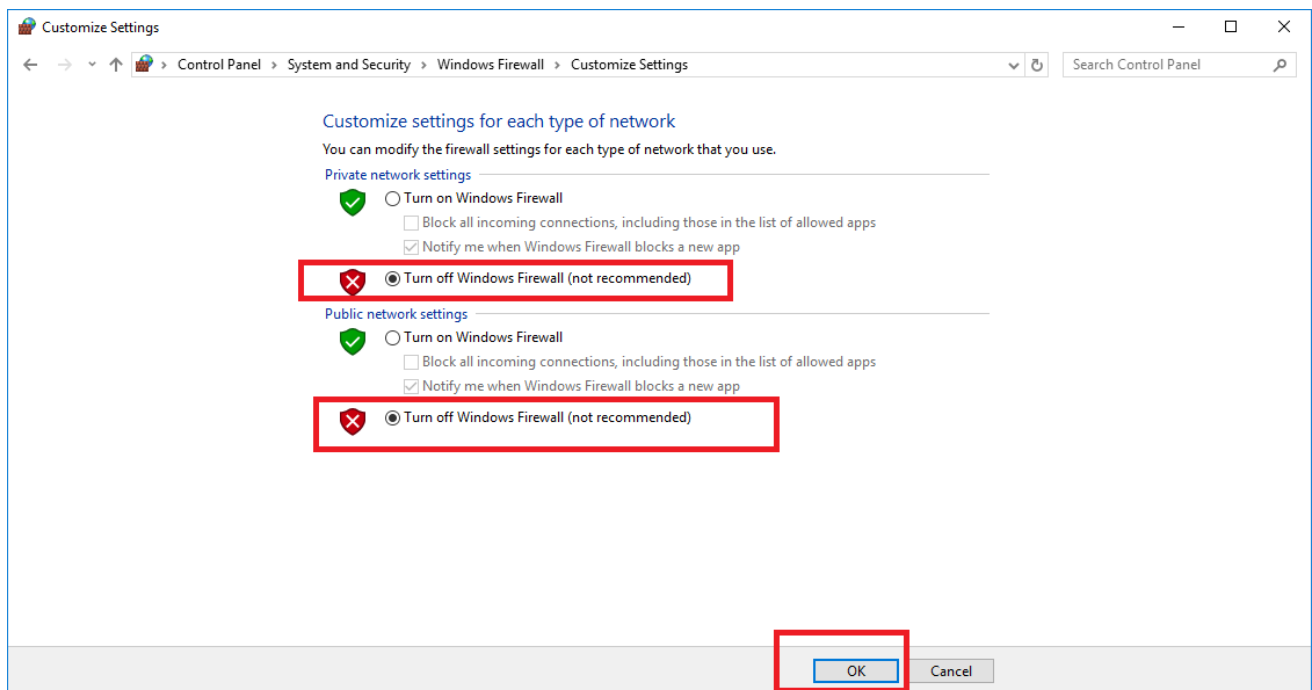


Firewall Setting

1. Click “Turn Windows Firewall on or off”.

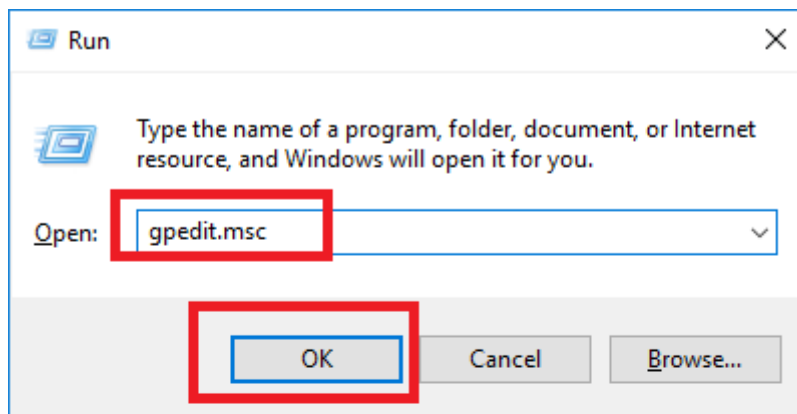


2. Click “Turn off windows Firewall” then click “OK”

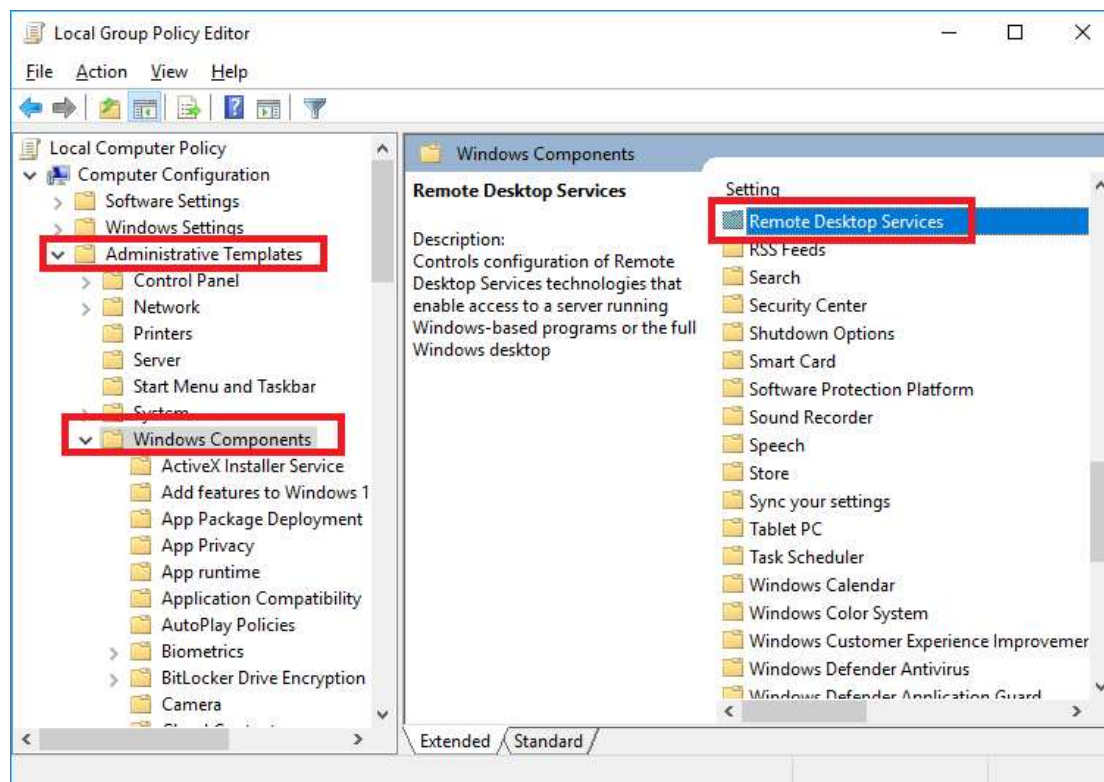


Group Policy Setting

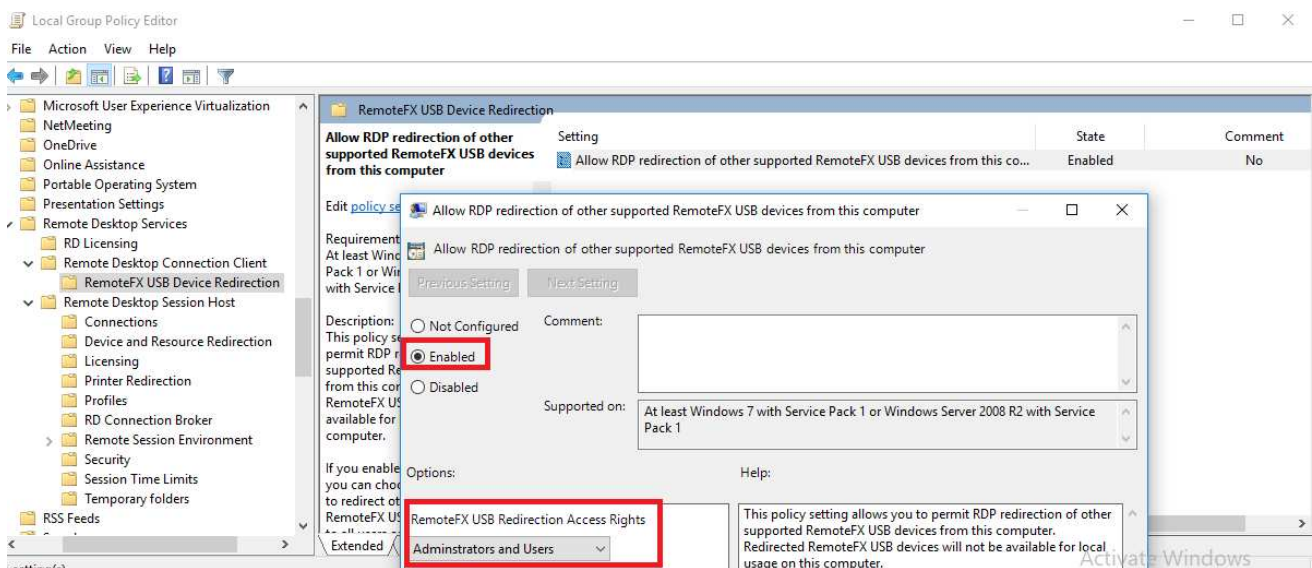
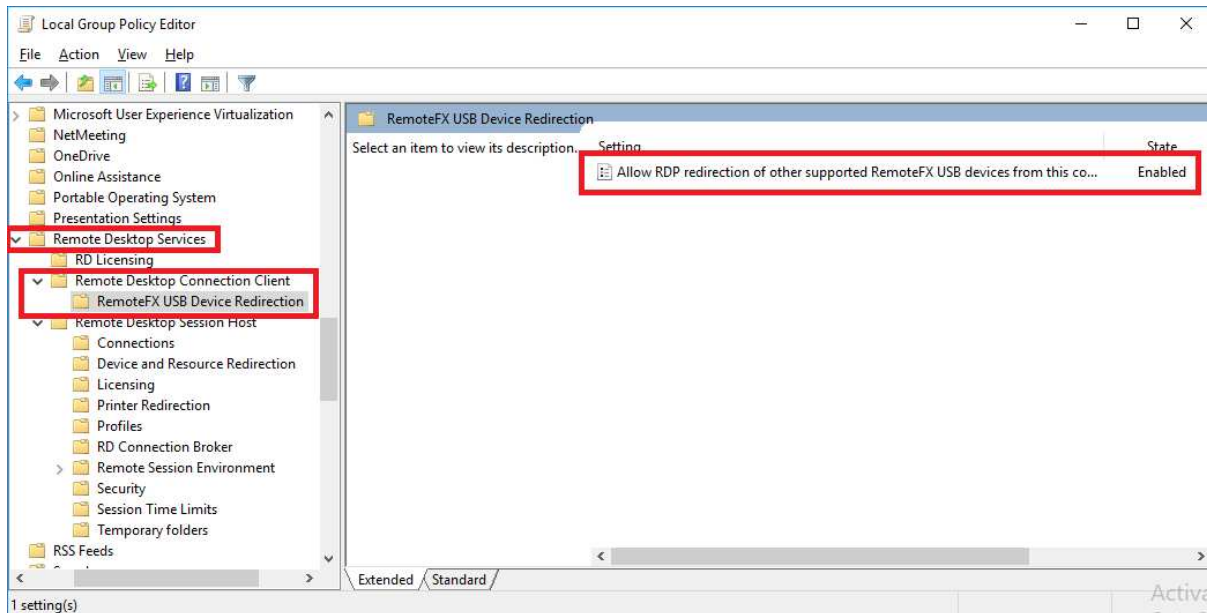
1. Launch "Run" and type "gpedit.msc" then click "OK".



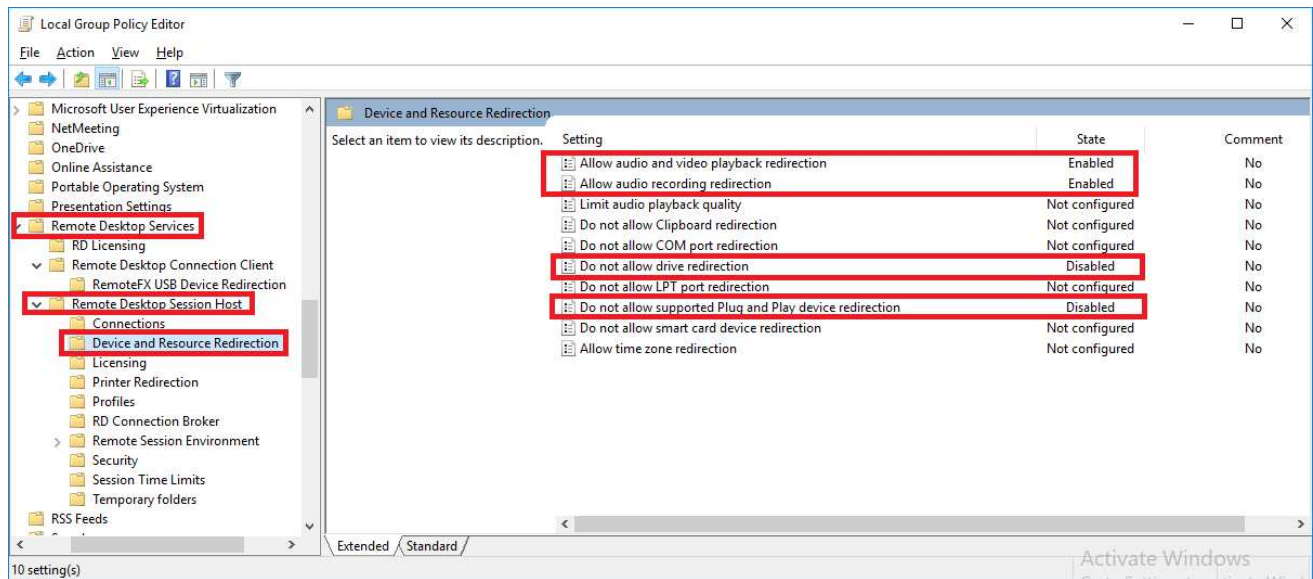
2. Computer Configuration → Windows Components → Remote Desktop Services.



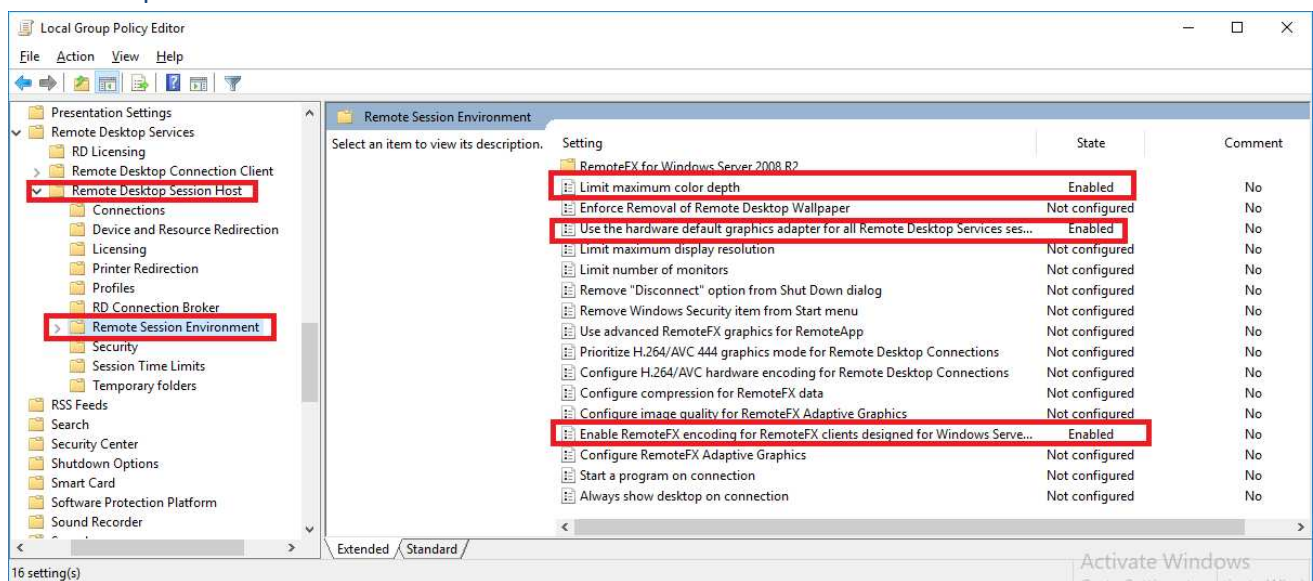
3. Computer Configuration → Windows Components → Remote Desktop Services → Remote Desktop Connection Client → RemoteFX USB Device Redirection → Enable and set policy “Allow RDP redirection of other supported RemoteFX USB device from this computer for “Admin and Users.



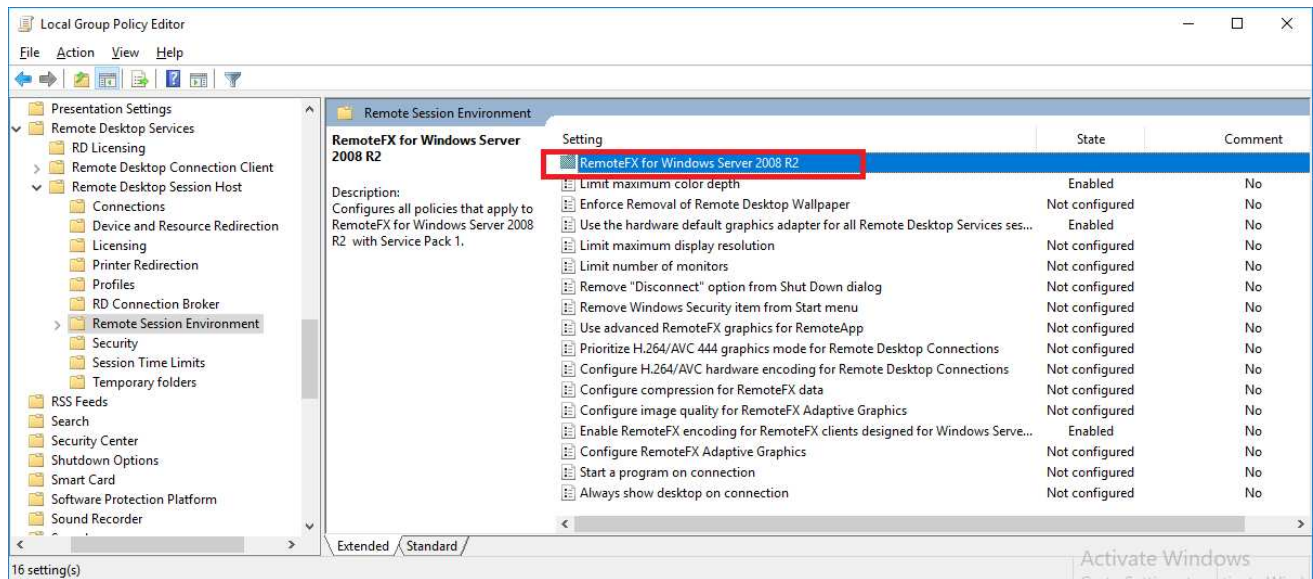
4. Computer Configuration → Windows Components → Remote Desktop Services → Remote Desktop Session Host → Device Resource Redirection.



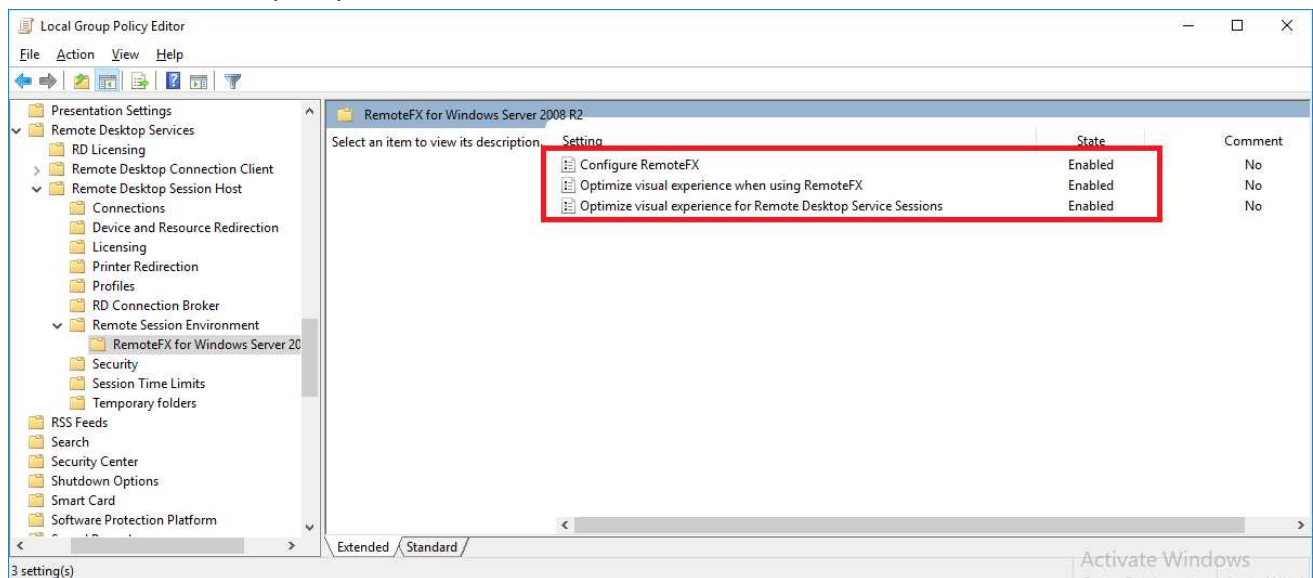
5. Computer Configuration → Windows Components → Remote Desktop Services → Remote Desktop Session Host → Remote Session Environment.



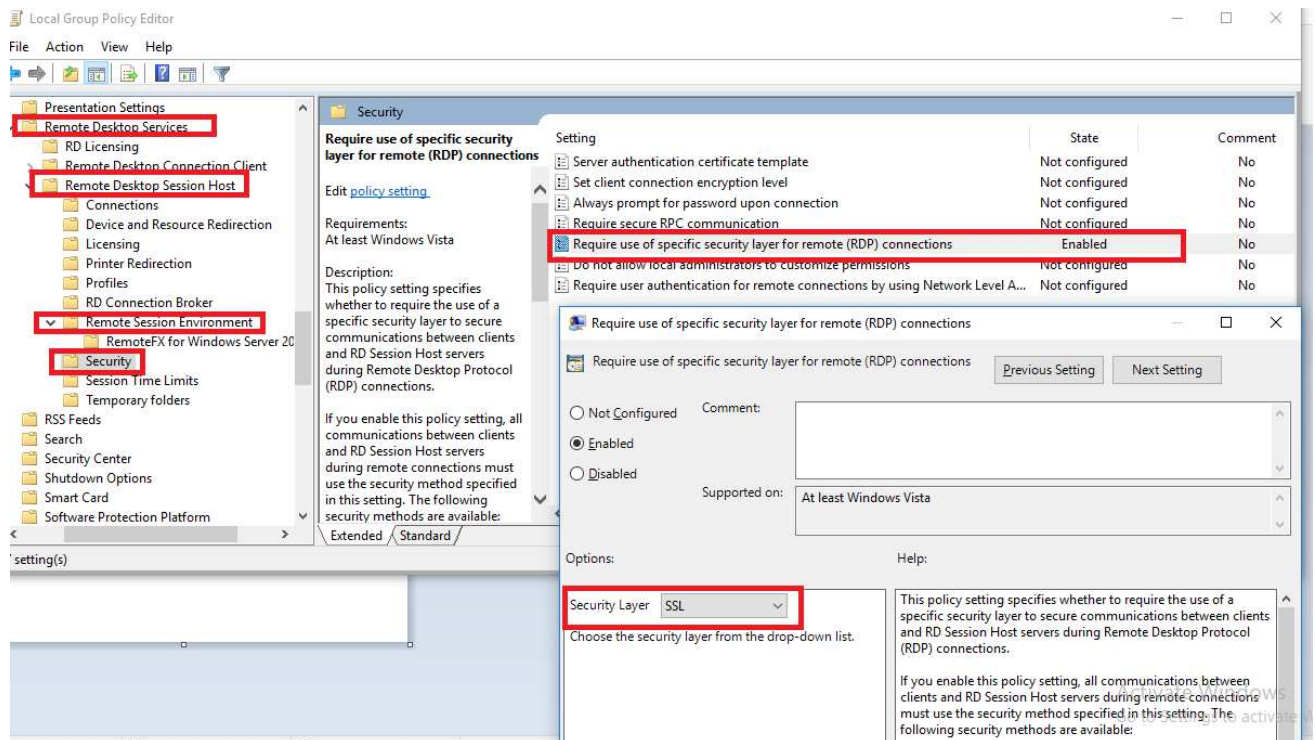
6. Computer Configuration → Windows Components → Remote Desktop Services → Remote Desktop Session Host → Remote Session Environment → RemoteFX for Windows Server 2008 R2.



6-1. Enable all three policy.



7. Computer Configuration → Windows Components → Remote Desktop Services → Remote Desktop Session Host → Security → Enable policy “Require user specific layer for remote (RDP)connections” choose option “SSL(TLS1.0)” the click “OK”.



8. Reboot the system , all the Remote Desktop configuration are finished and are able allow client remote access after system boot up.